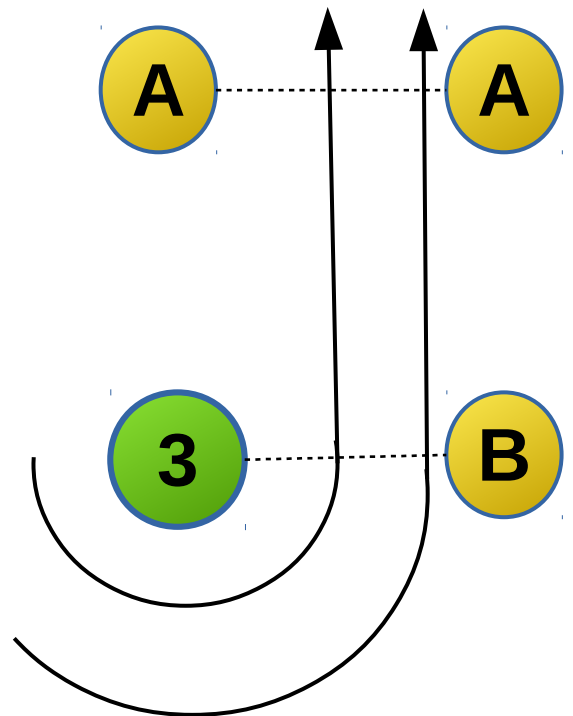
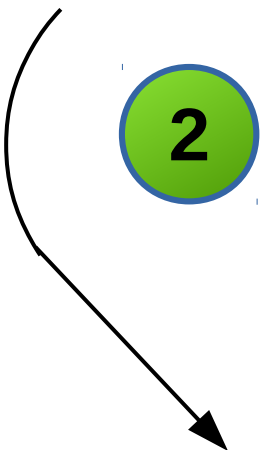
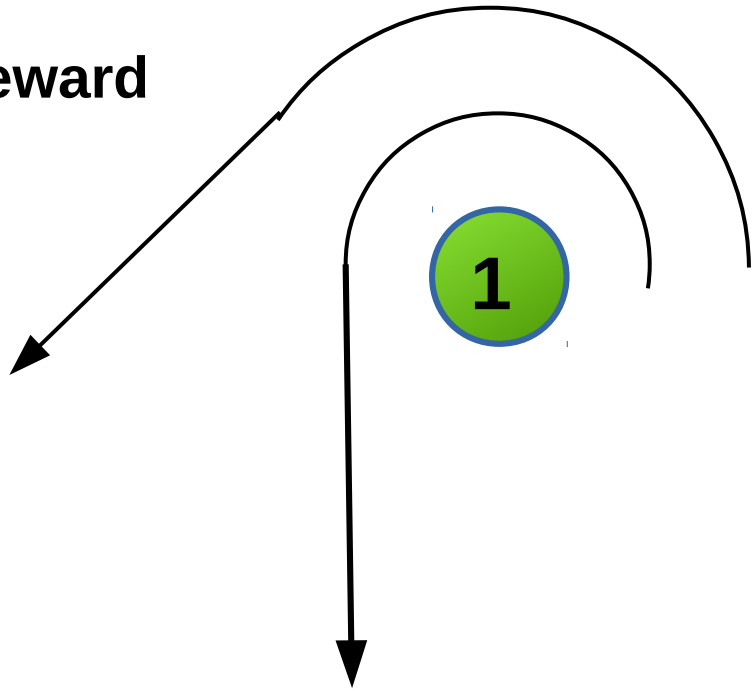
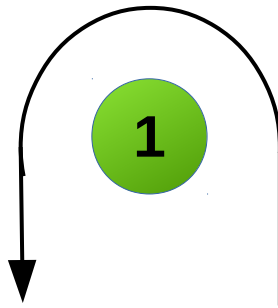


# Triangle & Windward/Leeward

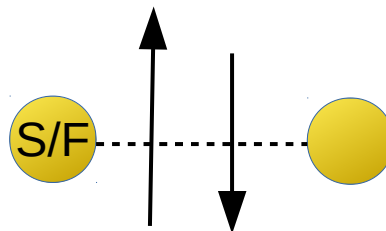
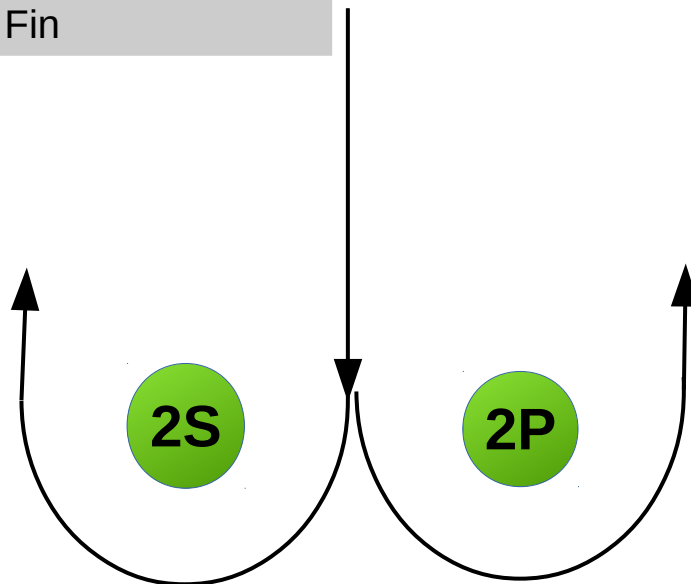


Signal	Mark Rounding Order
1A	Start A – 1 – 3 – Finish A
1B	Start B – 1 – Finish B
2A	Start A – 1 – 3 – 1 – 3 – Finish A
2B	Start B – 1 – 3 – 1 – Finish B
3A	Start A – 1 -3 – 1 – 3 – 1 -3 – Fin A
3B	Start B – 1 – 3 -1 – 3 -1 – Finish B
4A	Start A – 1 – 2 – 3 – 1 – 3 – Finish A
4B	Start B – 1 – 2 – 3 – 1 – Finish B
5A	Start A – 1 – 2 -3 – 1 – 3 -1 -2 – 3 – Finish A

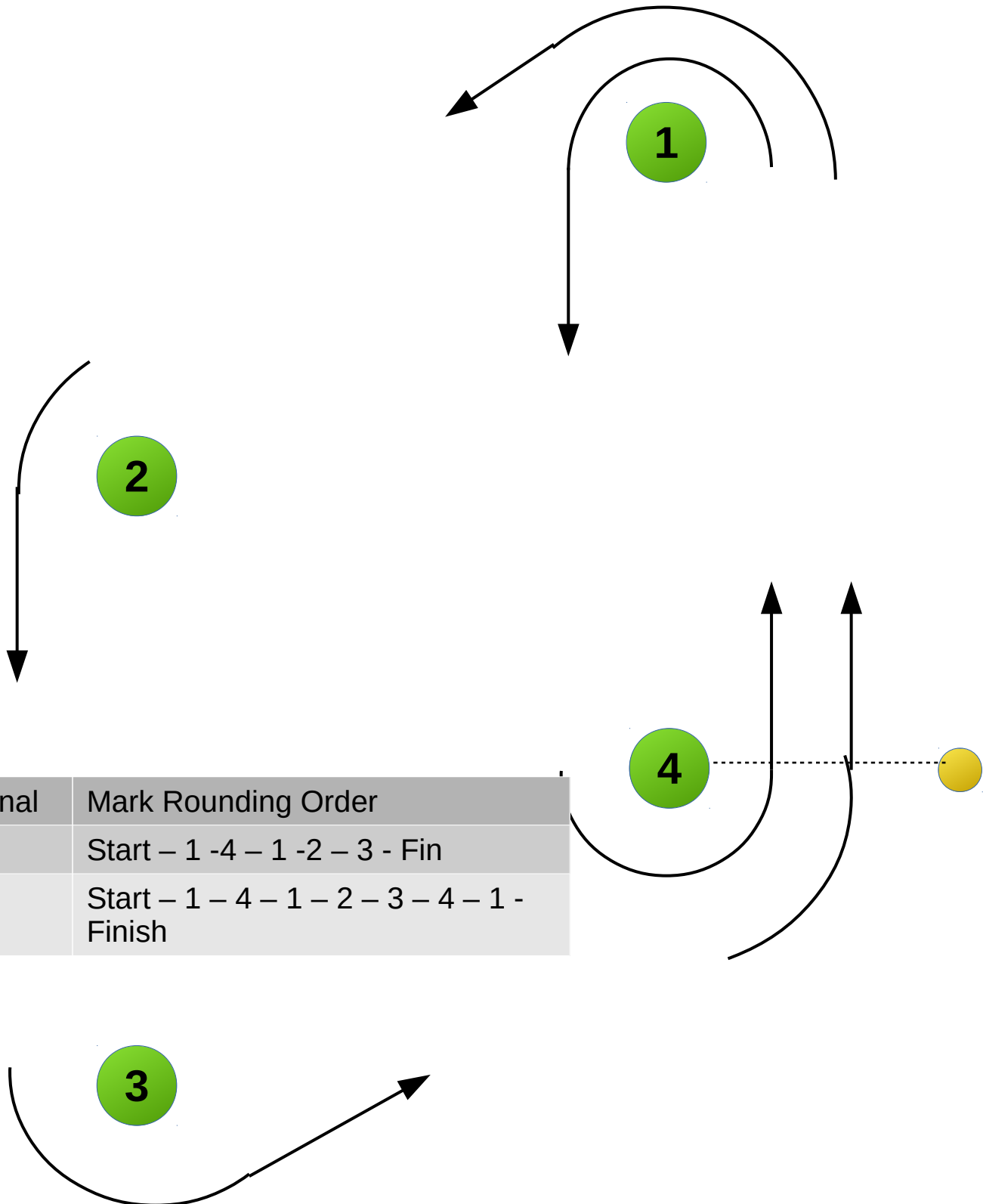
# Windward/Leeward with Leeward Gate



Signal	Mark rounding order
6	Start – 1 2S/SP – 1 - Finish
7	Start – 1- 2S/2P – 1 – 2S/2P – 1 – Finish
8	Start – 1 – 2S/2P – 1 – 2S/2P – 1 – 2S/2P – 1 - Fin



# Trapezoidal



Signal	Mark Rounding Order
9	Start - 1 - 4 - 1 - 2 - 3 - Fin
10	Start - 1 - 4 - 1 - 2 - 3 - 4 - 1 - Finish